

# K Sri Neerthi

Builder & Promoter



**SUNLIGHT**  
Developers

We Build Your Imagination  
(A unit of Sunlight Group)



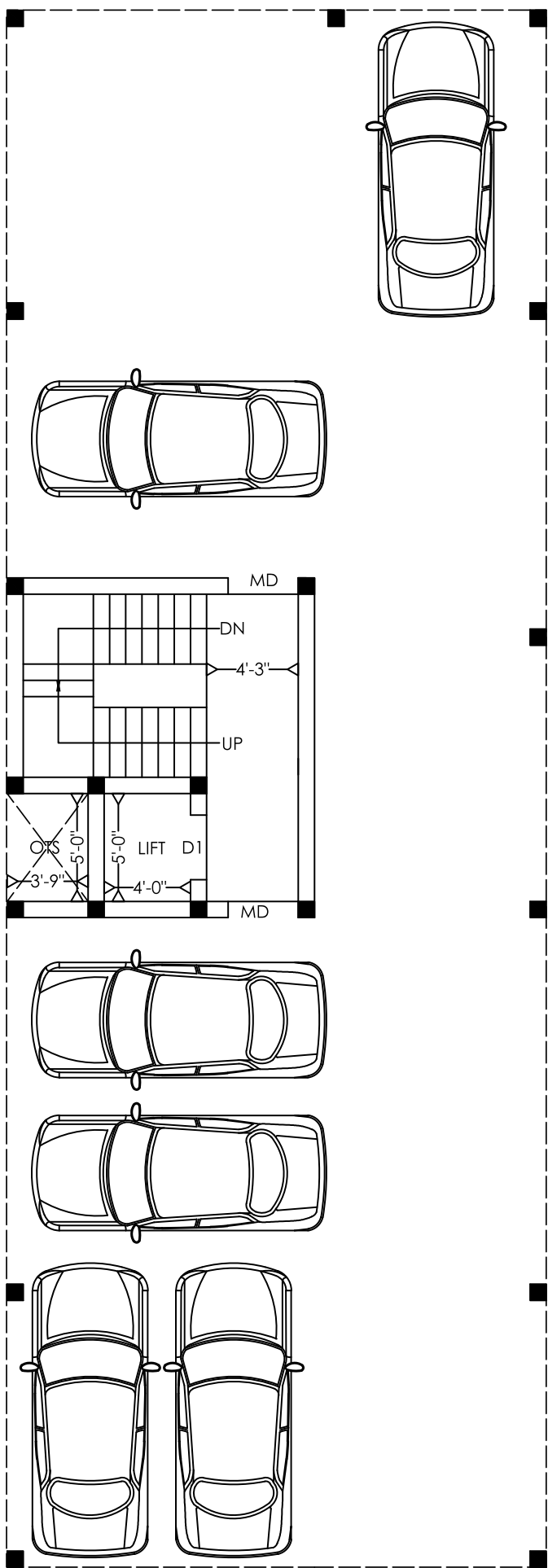
Scan for Location



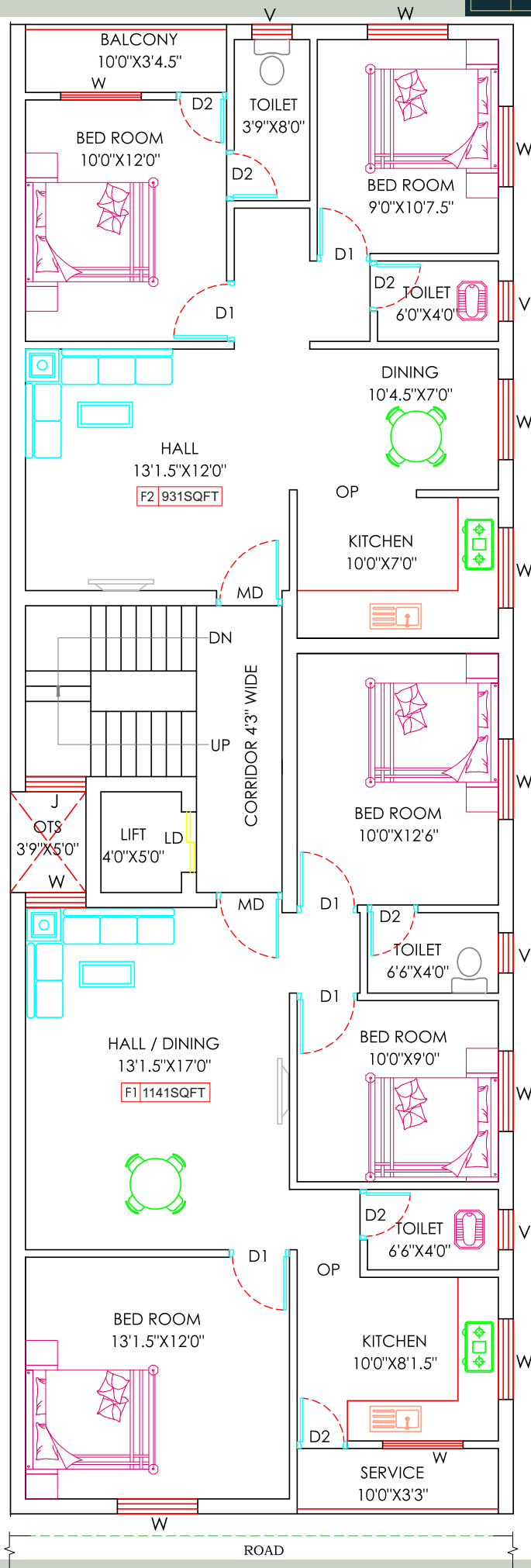


# STILT FLOOR PLAN

# FIRST, SECOND & THIRD TYPICAL FLOOR PLAN



EXISTING ROAD





## AREA DETAILS

Sl.No	Villa	Facing	BHK	Floor	Salable in Sq.Ft.	UDS in Sq.Ft.
01	F-1	North	3BHK	1 <sup>st</sup> Floor	1141	468
02	F-2	South	2BHK	1 <sup>st</sup> Floor	931	382
03	S-1	North	3BHK	2 <sup>nd</sup> Floor	1141	468
04	S-2	South	2BHK	2 <sup>nd</sup> Floor	931	382
05	T-1	North	3BHK	3 <sup>rd</sup> Floor	1141	468
06	T-2	South	2BHK	3 <sup>rd</sup> Floor	931	382

## PAYMENT SCHEDULE:

BOOKING ADVANCE	- 1,00,000/-
On Agreement (within 15 days from the Date of Booking)	- 15% (including Booking Advance)
On Completion of Basement	- 25%
On Completion of Ground Floor Roof	- 10%
On Completion of First Floor Roof	- 10%
On Completion of Second Floor Roof	- 10%
On Completion of Third Floor Roof	- 10%
On Completion of Brick work	- 10%
On Completion of Plastering	- 5%
On handing Over the Key	- Balance Payment

## Specifications

Structure	RCC Framed Structure.
Flooring	The Flooring in Living, Dining, Bedrooms, Kitchen and Balconies will be the Vitrified Tiles.
Wall Tile	The Toilets Flooring will be the first quality Anti Skid Tiles. Kitchen will have first quality Ceramic wall tiles for 2 feet above the counter. Toilet will have first quality Ceramic tiles for the 7 feet height from floor level.
Kitchen Counter & Sink	Kitchen counters will be of granite & Kitchen will have ss sink.
Main Door	Teak Wood Door Frame with Wooden Door Shutter
Bed & Bath Door	Country wood frame and flush solid core door Shutter. Bathroom doors are PVC.
Windows	UPVC Windows Fixed With Clear Glass & FITTED with MS Design Grill
Sanitary Fitting	Each Flat will have One Western closets with flush valve and one Indian closet with tank. All Bathrooms will have Geyser point Provision.
Electrical	Concealed wiring with best quality Switches and Invertor point Provision.
A.C. Point	Each flat will have A.C. point provision for all Bedrooms and living.
Painting	All Internal walls will be coated with putty and finished with Emulsion . Ceiling will be finished with Ultra Paint. External wall will be finished with Asian Paint Emulsion .
Borewell	Overhead Tank will be provided for the ground water source.



Clear Title



Architecture Elevation



E.B Safety Panel



Covered Car Parking



Lift



Door Camera



24X7 Power Supply



CCTV Surveillance

• As Per Vaastu

• Excellent Ground Water

• Near Colleges & Schools

2 & 3 BHK with  
CCP as per Vaastu



• Covered Car Parking

• Near Bus Stop

• Near Temples

## Key Layout

- 200mts From Camp road / 150 road Junction.
- Parallel to Tambaram - Velachery main road.

### ■ Schools

ALWIN public School  
Kendriya Vidyalaya CBSE  
ZION Matriculation  
ALPHA International  
MCC Secondary School

### ■ Colleges

Bharath Medical & Engineering.  
Madras Christian College.  
Prince Engineering College.  
Bharath Polytechnic.

### ■ Hospitals

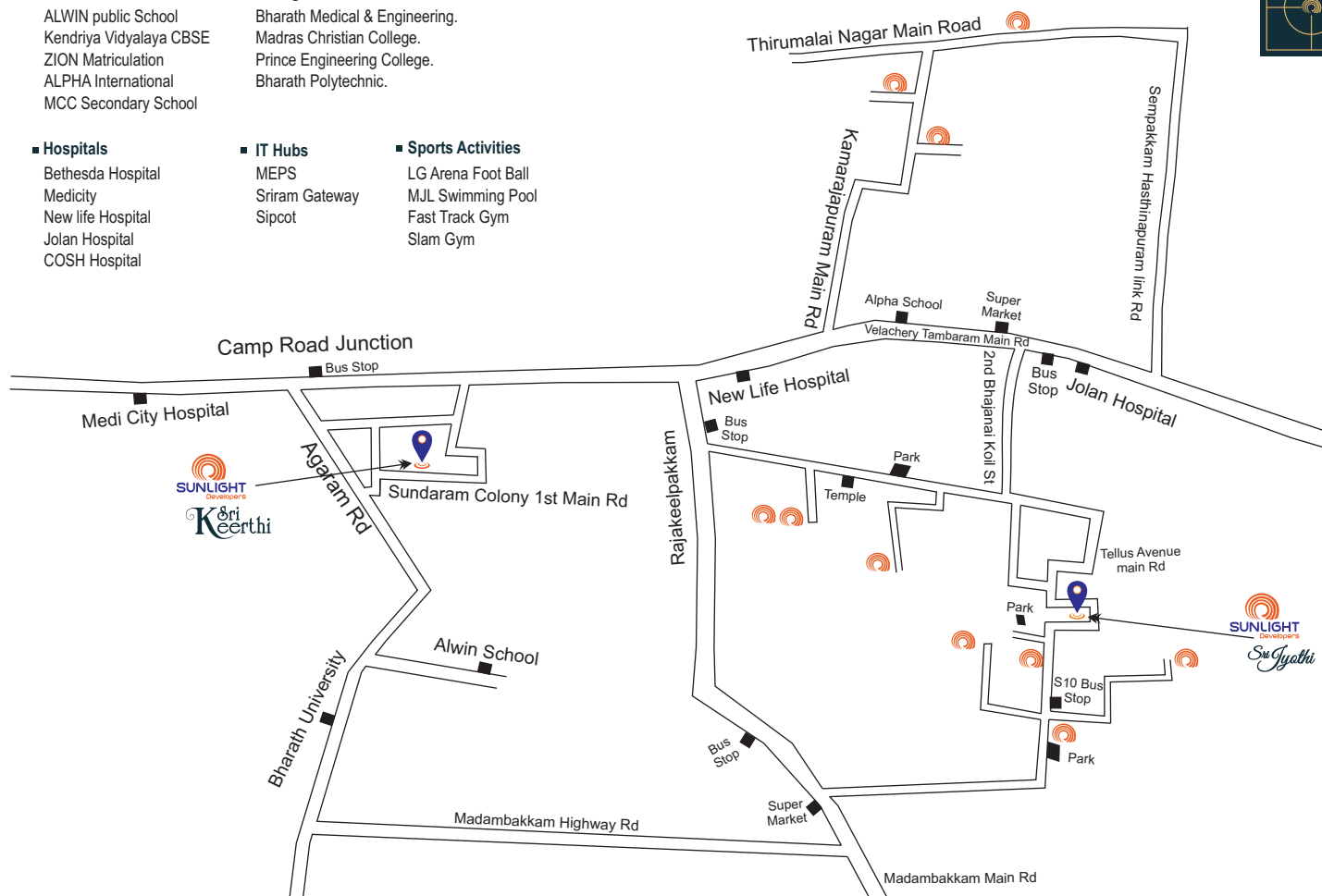
Bethesda Hospital  
Medicity  
New life Hospital  
Jolan Hospital  
COSH Hospital

### ■ IT Hubs

MEPS  
Sriram Gateway  
Sipcot

### ■ Sports Activities

LG Arena Foot Ball  
MJL Swimming Pool  
Fast Track Gym  
Slam Gym



### Builder & Promoter



SR Plaza, 2nd Floor, No.96, Velachery Main Road,  
Sembakkam, Chennai - 73.

For Booking Contact :

2228 2277, 4553 2277, 98414 25176

[www.sunlightgroup.co](http://www.sunlightgroup.co)

[sld@sunlightgroup.co](mailto:sld@sunlightgroup.co)

### Project Approved by



### Member of



**Disclaimer:** This brochure is purely a conceptual presentation does not carry any legal offerings.  
Builder Reserves rights to change, alter, modify the plans & specifications.